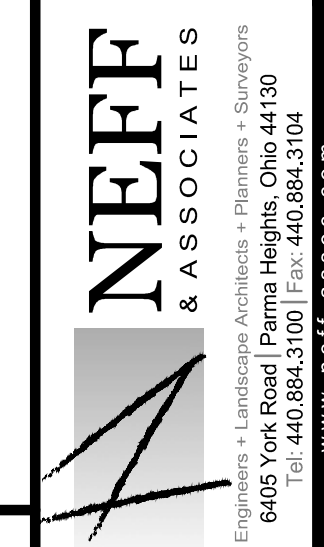


SCALE  
1 INCH = 40 FEET  
30 x 42  
SHEETS ONLY

NATHAN HALE STORM BASIN  
SITE DEMOLITION PLAN  
CITY OF PARMA HEIGHTS, COUNTY OF CUYAHOGA, STATE OF OHIO



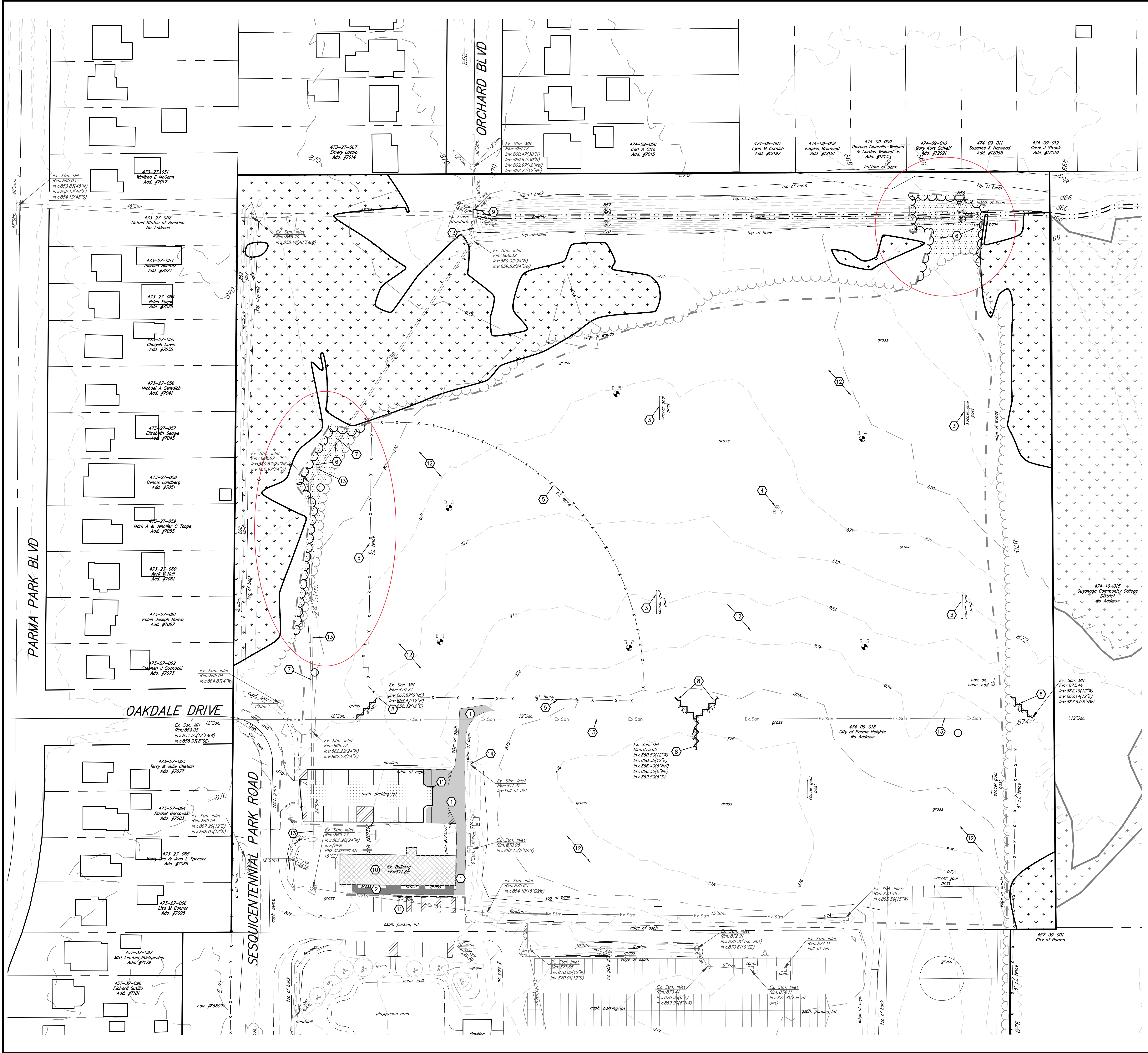
SHEET NO.  
C1.1

### KEY NOTES

- 1 REMOVE ASPHALT PAVEMENT FULL DEPTH
- 2 EX. SIDEWALK TO BE SAWCUT AND REMOVED (TO NEAREST JOINT)
- 3 EX. SOCCER GOAL POST TO BE REMOVED AND RETURNED TO OWNER
- 4 EX. IRRIGATION VALVE AND ASSOCIATED IRRIGATION SYSTEM TO BE REMOVED AS REQUIRED FOR NEW WORK
- 5 EX. FENCE TO BE REMOVED
- 6 ALL TREES AND SHRUBS WITHIN LIMITS OF DISTURBANCE TO BE REMOVED (TYP.)
- 7 EXPOSE EXISTING STORM SEWER PIPE AT LOCATION OF PROPOSED STRUCTURE IN ORDER TO FIELD VERIFY EXISTING INVERT, SIZE AND CONDITION. NOTIFY CITY, OWNER AND ENGINEER OF RESULTS PRIOR TO ORDERING STRUCTURE.
- 8 BULKHEAD 6" SANITARY CONNECTION AT MANHOLE
- 9 REPLACE EXISTING 8"WX8"HX4'D STRUCTURE (SEE C4.0)
- 10 EX. BUILDING TO BE DEMOLISHED. COMPLETELY REMOVE FOUNDATION, CAP EX. WATER/STORMS/AN/ELEC./GAS SERVICES FOR FUTURE BUILDING CONNECTION (SEE C4.0)
- 11 SAWCUT OR PLANE THE EXISTING PAVEMENT EDGE TO A STRAIGHT, CLEAN, VERTICAL FACE
- 12 CLEAR, GRUB, EXCAVATE TO PROPOSED ELEVATION. SAVE AND STORE TOPSOIL FOR RESURF
- 13 UNDERGROUND UTILITY TO REMAIN ACTIVE
- 14 REMOVE EX. STORM STRUCTURE

### SYMBOL LEGEND (DEMO)

- LIMITS OF EARTH DISTURBANCE ACTIVITIES (10.79 AC.)
- EX. UTILITY (TO BE REMOVED)
- TREE CLEARING LIMITS (0.19 AC.)
- AREA TO BE CLEARED AND GRUBBED
- FULL DEPTH ASPHALT PAVEMENT REMOVAL
- FULL DEPTH CONCRETE PAVEMENT REMOVAL
- EX. BUILDING (TO BE REMOVED)



REV NO.	DATE	DESCRIPTION
14087-C	11/05/20	90% REVIEW SET
DWG NAME	DRAWN BY	CHECKED BY
14087-C	CTB	BMU
JOB NO.	14087	

N:\LAND DEVELOPMENT\Proj\14087-PH\Nathan Hale Storm Basin\dwg\14087-C.dwg, 11/17/2020 11:14:12 AM, cwbk